

॥ श्री जलेषु जीवनम् ॥

AN ISO 9001:2015 CERTIFIED COMPANY

**Flow Gold**<sup>®</sup>  
P U M P

पानी का फलो...

मतलब...

फलो गोल्ड...



**5 Feet**  
Head Per Stage  
IN V-6 Pumps

**ENERGY SAVER PUMPS**  
20-30%  
Save Energy, Save Earth

**No.1**  
Quality Products

**7 Feet**  
S.S TECHNOLOGY  
Head Per Stage



V-3, V-4, V-5, V-6, V-7, V-9  
Submersible & Openwell Pump

www.goldstarengineers.com

AN ISO 9001:2015 CERTIFIED COMPANY



**GOLD STAR ENGINEERS**



### Company Profile :

**GOLD STAR ENGINEERS** is a Professionally managed firm Manufacturing Submersible Pumps for Agriculture, Domestic and Industrial Purpose. The Company is Successfully Run Under the wall Experience Management & the tremendous efforts in Developing Manufacturing by Mr. JAGDISH KACHHADIYA Proprietor of the Company. **GOLD STAR ENGINEERS** are Manufacturing V-3, V-4, V-5, V-6 Submersible Pump Set, Self Priming Pump as well as Openwell Submersible with S.S. Body and C.I Body BIS - 8034 and 14220 Marking, 5 STAR Rating & ISO 9001:2015 Certified Company.

Our Company strongly believes that to satisfy the customer, needs of sub Contractor is equally important and hence company wishes its sub constructors as a part of success.

Company Takes Extensive measures in the promotion of its Products by various means.

Company has widespread distributor Network the Company Distributers are selected based on their market reputation financial capabilities and attitude etc. Advertising media is also playing supportive role in launching the products in domestic market. Our major manufacturing processes are in house Turning, Pressing, Painting, Welding and Assembly Presently we supply submersible pump set all over INDIA.

### Vision :

Customer First Choice for Quality, Service, Trust and New Product Development....

### R & D :

**GOLD STAR ENGINEERS** having Continuous R & D efforts & looks for the New Development Work Keeping in View the Latest Trends in the World for Pump Manufacturing...

AN ISO 9001:2015 CERTIFIED COMPANY

**Flow Gold**  
PUMP



**GOLD STAR ENGINEERS**

## V-3 (75mm) Pump Sets & V-4 (100mm) Pump Sets

### Special Features :

30% Lower Power Consumption  
Long Durability Due to Complete SS Body  
Sand & Mud Proof Design Model  
Special Design to Withstand Wide Voltage Fluctuation  
Excellent Performance Even at Low Voltage  
Special Sand Guard Used to Prevent Ingress of Solids or Foreign Particles.

### V-3 Operating Limits :

Power Range : 0.5 H.P. to 1.5 H.P.  
(160/240 V, 50Hz AC Single Phase)  
Speed : 2800 RPM  
Max. Discharge : 90 LPM  
Min. Discharge : 30 LPM  
Per Stage Head : 10 Feet

### V-4 Operating Limits :

Power Range : 0.5 H.P. to 5.0 H.P.  
(240 V, 50Hz AC Single Phase)  
1.0 H.P. to 7.5 H.P.  
(420 V, 50Hz AC Single Phase)  
Speed : 2800 RPM  
Max. Discharge : 350 LPM  
Min. Discharge : 30 LPM  
Per Stage Head : 15 Feet



## V-5 (115mm) Pump Sets

### Special Features :

30% Lower Power Consumption  
Long Durability Due to Complete SS Body  
Special Design to Withstand Wide Voltage Fluctuation  
Excellent Performance Even at Low Voltage  
Special Sand Guard Used to Prevent Ingress of Solids or Foreign Particles.

### V-5 Operating Limits :

Power Range : 5.0 H.P. to 15 H.P.  
(415V, 50Hz AC Three Phase)  
Speed : 2800 RPM  
Max. Discharge : 450 LPM  
Min. Discharge : 40 LPM  
Max. Head : 1200 Feet



AN ISO 9001:2015 CERTIFIED COMPANY



**GOLD STAR ENGINEERS**



## V-6 (165mm) Pump Sets (K Type & Q Type)



V-6/5 V-6

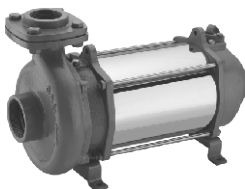
### Special Features :

- 30% Lower Power Consumption
- Long Durability Dur to Complete SS Body
- Sand & Mud Proof Design Model
- Special Designed SS 304 Grade Bowl For High Head & High Discharge.
- Excellent Performance Even at Low Voltage

### Operating Limits :

- Power Range : 3.0 H.P. to 30.0 H.P.,  
(440 V, 50Hz AC Three Phase)
- Speed : 2800 RPM
- Max. Discharge : 750 LPM K-Type, 1300 LPM Q-Type
- Min. Discharge : 45 LPM K-Type, 300 LPM Q-Type
- Max. Head : 1500 Feet K-Type, 600 Feet Q-Type
- Per Stage Head : 50 Feet K-Type, 45 Feet Q-Type, K-Type 70 Feet

## Openwell & Mini Openwell S.S. & MS Model



### Special Features :

- Special Hi-Flow & Hi-Head Models.
- Long Durability Dur to Non Corrosive S.S. Body
- High Discharge & Low Power Consumption.
- Excellent Performance Even at Low Voltage
- Special Design to Prevent Winding Burn Out.

### Operating Limits :

- Power Range : 0.5 H.P. to 5.0 H.P. (240 V, 50Hz AC Single Phase)
- 3.0 H.P. to 20.0 H.P. (420 V, 50Hz AC Three Phase)
- Speed : 2800 RPM
- Max. Discharge : 3100 LPM



AGRICULTURE



SWIMMING POOL



HIGHRISE



FOUNTAIN



GARDEN





# Index

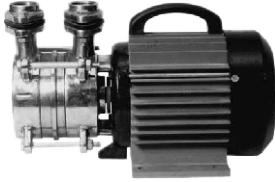
**GOLD STAR ENGINEERS**

**Dt. 01-10-2024**

**AN ISO 9001-2015  
Certified Company**

Category	Type	Description	H.P. Range	Page No.
<b>V-3</b>	नोरील बाउल इम्पेलेर,	<b>V-3</b> सबमर्शीबल पंप सेट <b>S.S.</b> बोडी नोरील बाउल इम्पेलेर,, 75 mm	0.5 to 1.5	1
<b>Self Priming</b>	सेल्फ प्राइमींग पंप	<b>Super Section / Big Flow / V Type</b>	0.5 to 1	1
<b>V-4</b>	नोरील बाउल इम्पेलेर,	<b>V-4</b> सबमर्शीबल पंप सेट <b>S.S.</b> बोडी, नोरील बाउल इम्पेलेर, 20/24 फुट हेड, 100 mm बोर	0.5 to 7.5	2-4
<b>V-4( Premium )</b>	नोरील बाउल इम्पेलेर,	<b>V-4</b> सबमर्शीबल पंप सेट <b>S.S.</b> बोडी, नोरील बाउल इम्पेलेर, 20/24 फुट हेड, 100 mm बोर	0.5 to 5	5-6
<b>V-4( R )</b>	वर्जीन R बाउल	<b>V-4 SS</b> सबमर्शीबल पंप सेट <b>S.S.</b> बोडी, वर्जीन R बाउल स्टील रिंग 26 फुट हेड, 100 mm बोर	3 to 7.5	7
<b>V-4(S.S.)</b>	<b>S.S.</b> फेब्रीकेट पंप	<b>V-4</b> सबमर्शीबल पंप सेट <b>S.S.</b> फेब्रीकेट पंप 304 <b>S.S.</b> बोडी, <b>S.S.</b> बाउल इम्पेलेर, 100 mm बोर, 20 फुट हेड	0.5 to 7.5	8-9
<b>V-5</b>	नोरील बाउल इम्पेलेर,	<b>V-5</b> सबमर्शीबल पंप सेट <b>S.S.</b> बोडी, नोरील बाउल इम्पेलेर,, 28 फुट हेड, 125 mm बोर	5 to 15	10
<b>V-5 (S.S.)</b>	<b>S.S.</b> 304 बाउल, 410 इम्पेलेर	<b>V-5</b> सबमर्शीबल <b>SS</b> बोडी पंप सेट, पंप <b>CI SS</b> , <b>S.S.</b> 304, नायलोन इम्पेलेर, <b>SS</b> 304, 410 इम्पेलेर 125mm बोर, 37 फुट हेड	5 to 15	11-12
<b>V-5</b>	मीक्स फ्लो	<b>V-5</b> मीक्स फ्लो सबमर्शीबल पंप सेट <b>S.S.</b> बोडी, <b>CI</b> बाउल, 410 <b>SS</b> इम्पेलेर, 140mm बोर, 30 फुट हेड	5 to 15	13
<b>V-5 to V-4</b>	<b>S.S.</b> फेब्रीकेट बाउल	<b>V-5 to V-4 SS</b> सबमर्शीबल पंप सेट 304 <b>SS</b> फेब्रीकेट बाउल, 20 फुट हेड	5 to 15	14
<b>V-6</b>	<b>S.S.</b> बाउल	<b>V-6</b> सबमर्शीबल पंप सेट, <b>S.S.</b> 304 बाउल, 410 इम्पेलेर, <b>S.S.</b> बोडी, 165mm बोर, 50 फुट हेड (श्री फेस & सीगल फेस)	3 to 30	15-16-17
<b>V-6</b>	K टाइप	<b>V-6</b> सबमर्शीबल पंप K टाइप <b>CI</b> बाउल, <b>S.S.</b> 410 इम्पेलेर, <b>CI</b> बाउल नोरील इम्पेलेर, <b>S.S.</b> जेकेट बाउल नोरील इम्पेलेर, 165 mm बोर	3 to 20	18-19
<b>V-6</b>	K टाइप 70 फीट	<b>V-6</b> सबमर्शीबल <b>SS</b> बोडी <b>S.S.</b> 304 बाउल, 304 इम्पेलेर 165mm बोर, 70 फुट हेड	3 to 30	20-21
<b>V-6</b>	Q टाइप मीक्स फ्लो	<b>V-6</b> सबमर्शीबल पंप सेट Q - टाइप मीक्स फ्लो <b>CI</b> बाउल, 410 <b>SS</b> इम्पेलेर, 165mm बोर, 38 फुट हेड	3 to 25	22-23
<b>V-6</b>	V-6 मोटर	<b>V-6</b> सबमर्शीबल मोटर & कीट (श्री फेस & सीगल फेस)	5 to 30	23
<b>V-6/V-8</b>	Q टाइप	<b>V-6/V-8</b> सबमर्शीबल <b>S.S.</b> बोडी, पंप Q- टाइप <b>CI</b> बाउल, ,410 <b>SS</b> इम्पेलेर, 60 फुट हेड	0.5 to 25	24
<b>V-7</b>	मीनी ओपनवेल	<b>V-7</b> मीनी ओपनवेल <b>S.S.</b> बोडी सीगल फेस & श्री फेस	0.5 to 5	25
<b>V-9</b>	होरीजन्टल ओपनवेल	ओपनवेल <b>S.S.</b> बोडी सीगल फेस & श्री फेस	3 to 12	25
<b>V-9</b>	<b>MS</b> होरीजन्टल ओपनवेल	<b>MS</b> होरीजन्टल ओपनवेल & <b>V-7</b> मीनी ओपनवेल <b>CI</b> बोडी	3 to 7.5	26
<b>V-9</b>	वर्टीकल ओपनवेल	वर्टीकल ओपनवेल <b>S.S.</b> बोडी	3 to 10	26
<b>Flow Measurement</b>		फ्लो मेझरमेन्ट		27
<b>H.D.P.E. Pipe</b>		अेच.डी.पी.ई. पाईप		28
<b>Control Panel</b>		कन्ट्रोल पेनल		29

Sr. No.	Model	H.P.	Stage	Single Phase Without Starter	Capacity in Feet	Delivery Line in MM	Flow in Lit./Mn Mini/Maxi
1	G - 4	0.5	10	8300	120	25	40
2	G - 4	0.75	15	9500	180	25	40
3	G - 4	1	20	11000	240	25	40
4	G - 4	1.5	25	12550	300	25	40



## सेल्फ प्राइमींग पंप



Sr. No.	Model	H.P.	KW	MRP	Pipe Size Suc.xDel.(mm)	RPM	Head Range (Meters)	Discharge Range (LPH)
1	GSE-3	0.50	0.37	5600	15 x 15	2880	6-30	480-2400
2	GSE-13	0.75	0.55	6700	25 x 25	2880	6-30	420-3300
3	GSE-9-HD	0.75	0.55	8800	25 x 25	2880	6-40	840-4080
4	GSE-15	1.00	0.75	7300	25 x 25	2880	8-45	900-4100
5	GSE-12	1.00	0.75	10100	25 x 25	2880	6-40	960-4680
6	GSE-6 (Flow)	0.50	0.37	3550	25 x 25	2880	6-18	900-2400
7	GSE-22 (Flow)	1.00	0.75	4875	25 x 25	2880	6-32	600-3120
8	GSE-V Type (Cl)	1.00	0.75	6200	25 x 25	2880	6-40	300-2700
9	GSE-V Type (Alu)	1.00	0.75	5830	25 x 25	2880	6-40	300-2700

Cash Discount will be.....% on the Price List

**Series GSE - 1**

Sr. No.	Model	H.P.	Stage	Phase	Outlet in Inch	Price (Complete Set)	Total Head in Meters	DISCHARGE IN LPM						
								15	25	35	40	50	60	75
1	GSE-10512	0.5	12	1	1	11100		66	60	54	48	36	22	15
2	GSE-17515	0.75	15	1	1	13050		82	75	67	60	45	30	18
3	GSE-11018	1	18	1/3	1	15250		99	90	81	72	54	36	20
4	GSE-11525	1.5	25	1/3	1	17750		138	125	112	100	75	50	28
5	GSE-12030	2	30	1/3	1	20250		165	150	132	120	90	60	36
6	GSE-13035	3	35	1/3	1	23750		200	170	150	140	105	70	38
7	GSE-15045	5	45	1/3	1	26750		252	220	200	180	140	95	55

**Series GSE - 2**

Sr. No.	Model	H.P.	Stage	Phase	Outlet in Inch	Price (Complete Set)	Total Head in Meters	DISCHARGE IN LPM						
								20	30	40	45	55	65	80
1	GSE-20510	0.5	10	1	1	10830		55	50	45	40	30	20	11
2	GSE-27512	0.75	12	1	1	12700		66	60	54	48	36	22	15
3	GSE-21015	1	15	1/3	1	14900		82	75	67	60	45	30	18
4	GSE-21520	1.5	20	1/3	1	17100		110	100	90	80	60	40	24
5	GSE-22025	2	25	1/3	1	19500		138	125	112	100	75	50	28
6	GSE-23030	3	30	1/3	1	23000		165	150	132	120	90	60	36
7	GSE-25040	5	40	1/3	1	26000		225	200	180	160	130	90	50
8	GSE-26045	6.5	45	3	1	31000		252	220	200	180	140	95	55
9	GSE-27050	7.5	50	3	1	33500		280	250	230	200	160	110	60

**Series GSE - 4**

Sr. No.	Model	H.P.	Stage	Phase	Outlet in Inch	Price (Complete Set)	Total Head in Meters	DISCHARGE IN LPM						
								30	40	55	70	85	100	110
10	GSE-40507	0.5	7	1	1.25	10750		38	34	32	28	15	10	6
11	GSE-47510	0.75	10	1	1.25	12600		55	50	45	40	30	20	11
12	GSE-41012	1	12	1/3	1.25	14900		66	60	54	48	36	24	15
13	GSE-41515	1.5	15	1/3	1.25	17000		82	75	67	60	45	30	18
14	GSE-42020	2	20	1/3	1.25	19350		110	100	90	80	60	40	24
15	GE4-325	3	25	1/3	1.25	23000		138	125	112	100	75	50	28
16	GSE-45035	5	35	1/3	1.25	26000		200	170	150	140	105	70	38
17	GSE-46040	6.5	40	3	1.25	31000		226	200	180	160	130	90	50
18	GSE-47045	7.5	45	3	1.25	33500		252	220	200	180	140	95	55

Cash Discount will be.....% on the Price List

**Series GSE - 5**

Sr. No.	Model	H.P.	Stage	Phase	Outlet in Inch	Price (Complete Set)	Total Head in Meters	DISCHARGE IN LPM						
								40	55	70	100	115	125	140
19	GSE-57507	0.75	7	1	1.25	12600	38	34	32	28	15	10	7	
20	GSE-51010	1	10	1/3	1.25	14900	55	50	45	40	30	20	11	
21	GSE-51512	1.5	12	1/3	1.25	17000	66	60	54	48	36	24	15	
22	GSE-52015	2	15	1/3	1.25	19350	82	75	67	60	45	30	18	
23	GSE-53020	3	20	1/3	1.25	23000	112	100	90	80	60	40	24	
24	GSE-55030	5	30	1/3	1.25	26000	164	150	135	120	90	60	35	
25	GSE-56035	6.5	35	3	1.25	31000	200	170	150	140	105	70	38	
26	GSE-57040	7.5	40	3	1.25	33500	225	200	180	160	130	90	50	

**Series GSE - 7**

Sr. No.	Model	H.P.	Stage	Phase	Outlet in Inch	Price (Complete Set)	Total Head in Meters	DISCHARGE IN LPM						
								60	75	95	120	135	145	160
27	GSE-71007	1	7	1/3	1.5	14850	38	34	31	28	21	14	10	
28	GSE-71510	1.5	10	1/3	1.5	17000	56	50	45	40	30	20	12	
29	GSE-72012	2	12	1/3	1.5	19250	66	60	54	48	36	24	14	
30	GSE-73015	3	18	1/3	1.5	23000	99	90	81	72	54	36	20	
31	GSE-75025	5	25	1/3	1.5	26000	138	125	112	100	75	50	28	
32	GSE-76030	6.5	30	3	1.5	31000	168	150	134	120	90	60	33	
33	GSE-77035	7.5	35	3	1.5	33500	196	210	188	140	126	84	46	

**Series GSE - 10**

Sr. No.	Model	H.P.	Stage	Phase	Outlet in Inch	Price (Complete Set)	Total Head in Meters	DISCHARGE IN LPM						
								75	90	110	140	155	170	180
34	GSE-101005	1	5	1/3	1.5	14850	26	24	22	20	15	12	7	
35	GSE-101508	1.5	8	1/3	1.5	17000	42	38	35	32	24	16	10	
36	GSE-102010	2	10	1/3	1.5	19250	56	50	45	40	30	20	14	
37	GSE-103015	3	15	1/3	1.5	23000	84	75	68	60	45	30	18	
38	GSE-105020	5	20	1/3	1.5	26000	112	100	90	80	60	40	24	
39	GSE-106025	6.5	25	3	1.5	31000	140	125	112	100	75	50	30	
40	GSE-107030	7.5	30	3	1.5	33500	168	150	135	120	90	60	36	

**Series GSE - 12**

Sr. No.	Model	H.P.	Stage	Phase	Outlet in Inch	Price (Complete Set)	Total Head in Meters	DISCHARGE IN LPM						
								95	110	130	160	175	190	210
41	GSE-121004	1	4	1/3	2	14900	22	20	18	16	13	8	5	
42	GSE-121507	1.5	7	1/3	2	17000	38	35	32	28	21	14	8	
43	GSE-122009	2	9	1/3	2	19300	52	46	41	36	26	16	6	
44	GSE-123012	3	12	1/3	2	23000	64	58	53	48	36	24	14	
45	GSE-125015	5	18	1/3	2	26000	83	72	66	60	45	30	16	
46	GSE-126020	6.5	20	3	2	31000	110	96	88	80	60	40	21	
47	GSE-127025	7.5	25	3	2	33500	104	120	110	100	75	50	26	

Cash Discount will be.....% on the Price List



**Series GSE - 18**

Sr. No.	Model	H.P.	Stage	Phase	Outlet in Inch	Price (Complete Set)	Total Head in Meters	DISCHARGE IN LPM						
								110	140	170	200	230	260	300
48	GSE-181506	1.5	6	1/3	2	17100	30	27	24	21	18	12	6	
49	GSE-182008	2	8	1/3	2	19300	40	36	32	28	24	16	8	
50	GSE-183010	3	10	1/3	2	23000	50	45	40	35	30	20	10	
51	GSE-185015	5	15	1/3	2	26000	75	66	60	52	45	30	15	
52	GSE-186018	6.5	18	3	2	31000	90	79	72	62	54	36	18	
53	GSE-187020	7.5	20	3	2	33500	100	88	80	69	60	40	20	

**Series GSE - 30**

Sr. No.	Model	H.P.	Stage	Phase	Outlet in Inch	Price (Complete Set)	Total Head in Meters	DISCHARGE IN LPM						
								115	150	170	220	250	300	350
54	GSE-301504	1.5	4	1/3	2	17100	18	16	15	14	12	10	8	
55	GSE-302006	2	6	1/3	2	19300	28	26	24	21	18	15	12	
56	GSE-303008	3	9	1/3	2	23000	36	33	30	28	24	20	16	
57	GSE-305012	5	12	1/3	2	26000	55	52	47	42	36	30	24	
58	GSE-306015	6.5	15	3	2	31000	69	64	59	52	45	37	30	
59	GSE-307018	7.5	18	3	2	33500	82	78	71	63	54	45	36	



**V-4 मोटर रेट**

Sr. No.	H.P.	Motor Rate				Only Pump Rate		
		Length	Price	Length	R - Series	H.P.	Stage	Rate
1	0.5	100	8410	-	-	0.5	10	2420
2	0.75	150	10100	-	-	0.75	12	2600
3	1.0	200	12000	-	-	1.0	15	2900
4	1.5	250	13800	-	-	1.5	20	3300
5	2.0	300	15800	-	-	2.0	25	3700
6	3.0	360	17900	350	19550	3.0	30	5100
7	5.0	350	19550	410	22900	5.0	40	6450
8	6.5	410	22900	450	24700	6.5	45	8100
9	7.5	450	24700	480	26700	7.5	50	8800

**V-4 Mix Flow**

Sr. No.	H.P.	Stage	Phase	Outlet in Inch	Price (Complete Set)
1	3	9	1/3	2-5	26100
2	5	12	3	2-5	30550

**Series GSE - 2**

Sr. No.	Model	H.P.	Stage	Phase	Outlet in Inch	Price (Complete Set)	Total Head in Meters	DISCHARGE IN LPM						
								18	28	37	42	52	61	75
1	GSE-20510	0.5	10	1	1	10400	Total Head in Meters	55	50	45	40	30	20	11
2	GSE-27512	0.75	12	1	1	11250		66	60	54	48	36	22	15
3	GSE-21015	1	15	1/3	1	13333		82	75	67	60	45	30	18
4	GSE-21520	1.5	20	1/3	1	15600		110	100	90	80	60	40	24
5	GSE-22025	2	25	1/3	1	17800		138	125	112	100	75	50	28
6	GSE-23030	3	30	1/3	1	20550		165	150	132	120	90	60	36
7	GSE-25040	5	40	1/3	1	23350		225	200	180	160	130	90	50

**Series GSE - 4**

Sr. No.	Model	H.P.	Stage	Phase	Outlet in Inch	Price (Complete Set)	Total Head in Meters	DISCHARGE IN LPM						
								28	37	52	65	79	93	102
8	GSE-40507	0.5	7	1	1.25	10400	Total Head in Meters	38	34	32	28	15	10	6
9	GSE-47510	0.75	10	1	1.25	11250		55	50	45	40	30	20	11
10	GSE-41012	1	12	1/3	1.25	13333		66	60	54	48	36	24	15
11	GSE-41515	1.5	15	1/3	1.25	15600		82	75	67	60	45	30	18
12	GSE-42020	2	20	1/3	1.25	17800		110	100	90	80	60	40	24
13	GSE-43025	3	25	1/3	1.25	20550		138	125	112	100	75	50	28
14	GSE-45035	5	35	1/3	1.25	23350		200	170	155	140	105	70	38

**Series GSE - 5**

Sr. No.	Model	H.P.	Stage	Phase	Outlet in Inch	Price (Complete Set)	Total Head in Meters	DISCHARGE IN LPM						
								37	57	65	93	107	116	130
15	GSE-57507	0.75	7	1	1.25	11250	Total Head in Meters	38	34	32	28	15	10	7
16	GSE-51010	1	10	1/3	1.25	13333		55	50	45	40	30	20	11
17	GSE-51512	1.5	12	1/3	1.25	15600		66	60	54	48	36	24	15
18	GSE-52015	2	15	1/3	1.25	17800		82	75	67	60	45	30	18
19	GSE-53020	3	20	1/3	1.25	20550		110	100	88	80	60	40	24
20	GSE-55030	5	30	1/3	1.25	23350		164	150	132	120	90	60	36

**Series GSE - 7**

Sr. No.	Model	H.P.	Stage	Phase	Outlet in Inch	Price (Complete Set)	Total Head in Meters	DISCHARGE IN LPM						
								56	70	88	111	126	135	148
21	GSE-71007	1	7	1/3	1.5	13200	Total Head in Meters	38	34	31	28	21	14	10
22	GSE-71510	1.5	10	1/3	1.5	15500		56	50	45	40	30	20	12
23	GSE-72012	2	12	1/3	1.5	17700		66	60	54	48	36	24	14
24	GSE-73018	3	18	1/3	1.5	20500		99	90	81	72	54	36	21
25	GSE-75025	5	25	1/3	1.5	23300		138	125	112	100	75	50	28

Cash Discount will be.....% on the Price List

**Series GSE - 10**

Sr. No.	Model	H.P.	Stage	Phase	Outlet in Inch	Price (Complete Set)	Total Head in Meters	DISCHARGE IN LPM						
								70	84	102	130	150	165	175
26	GSE-101005	1	5	1/3	1.5	13333	26	24	22	20	15	12	7	
27	GSE-101508	1.5	8	1/3	1.5	15600	42	38	35	32	24	16	10	
28	GSE-102010	2	10	1/3	1.5	17800	56	50	45	40	30	20	14	
29	GSE-103015	3	15	1/3	1.5	20550	84	75	67	60	45	30	21	
30	GSE-105020	5	20	1/3	1.5	23350	112	100	90	80	60	40	28	

**Series GSE - 12**

Sr. No.	Model	H.P.	Stage	Phase	Outlet in Inch	Price (Complete Set)	Total Head in Meters	DISCHARGE IN LPM						
								90	105	120	150	160	175	195
31	GSE-121004	1	4	1/3	2	13333	22	20	18	16	13	8	5	
32	GSE-121507	1.5	7	1/3	2	15600	38	35	32	28	21	14	8	
33	GSE-122009	2	9	1/3	2	17800	52	46	42	36	26	16	6	
34	GSE-123012	3	12	1/3	2	20550	64	58	53	48	36	24	14	
35	GSE-125015	5	18	1/3	2	23350	83	72	66	60	45	30	16	

**Series GSE - 18**

Sr. No.	Model	H.P.	Stage	Phase	Outlet in Inch	Price (Complete Set)	Total Head in Meters	DISCHARGE IN LPM						
								105	135	165	190	220	250	290
36	GSE-181506	1.5	6	1/3	2	15600	30	27	24	21	18	12	6	
37	GSE-182008	2	8	1/3	2	17800	40	36	32	28	24	16	8	
38	GSE-183010	3	10	1/3	2	20550	50	45	40	35	30	20	10	
39	GSE-185018	5	15	1/3	2	23350	75	66	60	52	54	30	15	



**V-4 मोटर रेट**

Sr. No.	H.P.	Motor Rate			
		Length	Price	R - Length	R - Series
1	0.5	80	7700	-	-
2	0.75	100	8410	-	-
3	1.0	150	10100	-	-
4	1.5	200	12000	-	-
5	2.0	250	13800	-	-
6	3.0	300	15800	350	19550
7	5.0	360	17900	410	22900
8	6.5	410		450	24700
9	7.5	450		480	26700



# V-4 (R) V-5 (R)

IS : 8034



CML3876686

**GOLD STAR ENGINEERS**

**V-4 सबमर्शीबल पंप सेट SS बोडी  
R वर्जिन बाउल, स्टील रिंग  
100mm बोर, 26 फुट हेड**

AN ISO 9001-2015  
Certified Company

R - 1								Outlet - 1"							
Sr. No.	Model	H.P.	Stage	Outlet in Inch	For Pump Only	V-4 Pump Set	V-5 to V/4R Pump Set	Total Head in Meters	DISCHARGE IN LPM						
									65	55	45	35	30	25	20
1	GR - 3035	3	35	1.25	8400	28560	31700	105	122	140	175	192	210	245	
2	GR - 5045	5	45	1.25	10150	33050	35650	135	157	180	225	247	270	315	

R - 2								Outlet - 1.25"							
Sr. No.	Model	H.P.	Stage	Outlet in Inch	For Pump Only	V-4 Pump Set	V-5 to V/4R Pump Set	Total Head in Meters	DISCHARGE IN LPM						
									85	75	60	45	40	30	25
3	GR - 3030	3	30	1.25	7500	27660	30800	90	105	120	150	165	180	210	
4	GR - 5040	5	40	1.25	9500	32400	35000	120	140	160	200	220	240	280	
5	GR - 6545	6.5	45	1.25	10500	35200		135	157	180	225	247	270	315	

R - 3								Outlet - 1.5"							
Sr. No.	Model	H.P.	Stage	Outlet in Inch	For Pump Only	V-4 Pump Set	V-5 to V/4R Pump Set	Total Head in Meters	DISCHARGE IN LPM						
									100	90	80	60	50	40	30
6	GR - 3023	3	23	1.5	6100	26260	29400	69	80	92	115	126	138	161	
7	GR - 5036	5	35	1.5	8400	31300	33900	105	122	140	175	192	210	245	
8	GR - 6540	6.5	40	1.5	9500	34200	37000	120	140	160	200	220	240	280	
9	GR - 7545	7.5	45	1.5	10500	37200	40700	135	157	180	225	247	270	315	
10	GR - 7550	10	50	1.5	11500		46650	150	175	200	250	275	300	350	

R - 5								Outlet - 1.5"							
Sr. No.	Model	H.P.	Stage	Outlet in Inch	For Pump Only	V-4 Pump Set	V-5 to V/4R Pump Set	Total Head in Meters	DISCHARGE IN LPM						
									120	105	90	70	60	40	35
11	GR - 3018	3	18	1.5	6100	26260	29400	54	69	84	99	107	116	125	
12	GR - 5030	5	30	1.5	8200	31100	33700	90	115	135	165	178	191	205	
13	GR - 6535	6.5	35	1.5	9400	34100	36900	105	135	163	192	208	224	240	
14	GR - 7540	7.5	40	1.5	10400	37100	40900	120	153	186	220	240	260	270	
15	GR - 1045	10	45	1.5	11500		46650	135	172	210	247	270	292	300	

R - 7								Outlet - 2"							
Sr. No.	Model	H.P.	Stage	Outlet in Inch	For Pump Only	V-4 Pump Set	V-5 to V/4R Pump Set	Total Head in Meters	DISCHARGE IN LPM						
									140	120	105	85	70	60	40
16	GR - 3015	3	15	2	5050	25210	28350	45	57	70	82	90	98	105	
17	GR - 5025	5	25	2	7200	30100	32700	75	95	115	137	149	161	195	
18	GR - 6530	6.5	30	2	8200	32900	35700	90	115	140	165	180	195	210	
19	GR - 7535	7.5	35	2	9400	36100	39900	105	134	163	192	209	225	245	
20	R - 1040	10	40	2	10500		45650	120	153	186	220	240	260	270	

Cash Discount will be.....% on the Price List

## Series GSE - 2 (D - 1)

Sr. No.	Model	H.P.	Stage	Phase	Outlet in mm	Price (Pump Only)	Price (Complete Set)	Total Head In Meters	DISCHARGE IN LPM						
									25	33	40	45	55	65	80
1	GSE-20510	0.5	10	1	1	7820	16250	44	36	47	40	23	15	8	
2	GSE-27512	0.75	12	1	1	8750	18850	74	62	56	48	38	26	14	
3	GSE-21015	1	15	1/3	1	10025	22025	93	78	70	60	48	33	18	
4	GSE-21520	1.5	20	1/3	1	12225	26025	124	104	94	80	64	44	24	
5	GSE-22025	2	25	1/3	1	14400	30200	155	130	117	100	80	55	30	
6	GSE-23030	3	30	1/3	1	17025	34925	186	156	141	120	96	66	36	
7	GSE-25040	5	40	1/3	1	20925	40475	248	208	188	160	128	88	48	
8	GSE-26045	6.5	45	3	1	23125	46025	279	234	211	180	144	99	54	
9	GSE-27050	7.5	50	3	1	26200	50900	310	292	235	200	160	110	60	

## Series GSE - 4 (D - 1.25)

Sr. No.	Model	H.P.	Stage	Phase	Outlet in mm	Price (Pump Only)	Price (Complete Set)	Total Head In Meters	DISCHARGE IN LPM						
									35	45	55	70	85	100	110
10	GSE-40507	0.5	7	1	1.25	6525	14935	28	26	23	28	15	10	6	
11	GSE-47510	0.75	10	1	1.25	7825	17925	40	37	33	40	21	14	8	
12	GSE-41012	1	12	1/3	1.25	8750	20750	66	60	54	48	36	24	15	
13	GSE-41515	1.5	15	1/3	1.25	10025	23825	90	75	67	60	45	30	18	
14	GSE-42020	2	20	1/3	1.25	12225	28025	120	100	90	80	60	40	24	
15	GSE-43025	3	25	1/3	1.25	14400	32300	150	125	112	100	75	50	28	
16	GSE-45035	5	35	1/3	1.25	18777	38327	200	170	155	140	105	70	38	
17	GSE-46040	6.5	40	3	1.25	20925	43825	228	194	178	160	120	80	44	
18	GSE-47045	7.5	45	3	1.25	23125	47825	256	218	200	180	135	90	50	

## Series GSE - 5 (D - 1.25)

Sr. No.	Model	H.P.	Stage	Phase	Outlet in mm	Price (Pump Only)	Price (Complete Set)	Total Head In Meters	DISCHARGE IN LPM						
									45	60	70	100	115	125	140
19	GSE-57507	0.75	7	1	1.25	6625	16725	26	24	22	28	15	10	7	
20	GSE-51010	1	10	1/3	1.25	8375	20375	56	50	45	40	30	20	11	
21	GSE-51512	1.5	12	1/3	1.25	9300	23100	66	60	54	48	36	24	15	
22	GSE-52015	2	15	1/3	1.25	10775	26575	85	75	67	60	45	30	18	
23	GSE-53020	3	20	1/3	1.25	13225	31125	110	100	90	80	60	40	24	
24	GSE-55030	5	30	1/3	1.25	18050	37600	170	150	135	120	90	60	35	
25	GSE-56035	6.5	35	3	1.25	20475	43375	198	175	157	140	105	70	38	
26	GSE-57040	7.5	40	3	1.25	22875	47575	226	200	180	160	120	80	44	

**Flow Gold**  
PUMP

**GOLD STAR ENGINEERS**

**V-4 (S.S.)**

V-4 सबमर्शीबल पंप सेट S.S.बोडी,  
S.S. 304 बाउल इम्पेल्स,  
100 mm बोर, 20 फुट हेड

IS : 8034



CML3876686

AN ISO 9001-2015  
Certified Company

**Series GSE - 7 (D - 1.5)**

Sr. No.	Model	H.P.	Stage	Phase	Outlet in mm	Price (Pump Only)	Price (Complete Set)	Total Head in Meters	DISCHARGE IN LPM						
									60	75	95	120	135	145	160
27	GSE-71008	1	8	1/3	1.5	7375	19375	38	34	31	32	21	14	10	
28	GSE-71510	1.5	10	1/3	1.5	8375	22175	56	50	45	40	30	20	12	
29	GSE-72012	2	12	1/3	1.5	9300	25100	66	60	54	48	36	24	14	
30	GSE-73015	3	15	1/3	1.5	10775	28675	85	74	67	60	45	30	18	
31	GSE-75025	5	25	1/3	1.5	15600	35150	140	125	112	100	75	50	28	
32	GSE-76030	6.5	30	3	1.5	18050	40950	168	150	134	120	90	60	33	
33	GSE-77035	7.5	35	3	1.5	20475	45175	196	210	188	140	126	84	46	

**Series GSE - 10 (D - 2)**

Sr. No.	Model	H.P.	Stage	Phase	Outlet in mm	Price (Pump Only)	Price (Complete Set)	Total Head in Meters	DISCHARGE IN LPM						
									75	90	110	140	155	170	180
34	GSE-101508	1.5	8	1/3	1.5	7375	21175	42	38	35	32	24	16	10	
35	GSE-102010	2	10	1/3	1.5	8375	24175	56	50	45	40	30	20	14	
36	GSE-105020	5	20	1/3	1.5	13200	32750	112	100	90	80	60	40	24	
37	GSE-106025	6.5	25	3	1.5	15600	38500	140	125	112	100	75	50	30	
38	GSE-107030	7.5	30	3	1.5	18050	42750	168	150	135	120	90	60	36	

**Series GSE - 12 (D - 2)**

Sr. No.	Model	H.P.	Stage	Phase	Outlet in mm	Price (Pump Only)	Price (Complete Set)	Total Head in Meters	DISCHARGE IN LPM						
									75	90	110	140	155	170	180
39	GSE-101508	3	12	1/3	1.5	9300	27200	42	38	35	32	24	16	10	
40	GSE-102010	5	15	1/3	1.5	10475	30025	56	50	45	40	30	20	14	
41	GSE-105020	6.5	20	1/3	1.5	13200	36100	112	100	90	80	60	40	24	
42	GSE-106025	7.5	25	3	1.5	15600	40300	140	125	112	100	75	50	30	



Cash Discount will be.....% on the Price List

## GSE - 5/6

Sr. No.	Model	H.P.	Stage	Phase	Outlet In Inch	For Pump Only	Pump Set (Complete Set)		DISCHARGE IN LPM						
									210	175	145	115	90	55	0
1	GSE-5/315	3	15	1/3	1.5	7500	30800	Total Head In Meters	0	32	62	81	105	120	135
2	GSE-5/520	5	20	1/3	1.5	8300	33800		0	50	82	114	140	160	180
3	GSE-5/6525	6.5	25	1/3	1.5	9850	37350		0	63	103	142	175	200	225
4	GSE-5/7530	7.5	30	3	1.5	11000	41500		0	76	124	170	210	240	270
5	GSE-5/1045	10	40	3	1.5	13900	49050		0	113	185	256	315	360	405

## GSE - 7

Sr. No.	Model	H.P.	Stage	Phase	Outlet In Inch	For Pump Only	Pump Set (Complete Set)		DISCHARGE IN LPM						
									245	205	160	125	110	65	0
6	GSE-7/310	3	10	1/3	2	6550	29850	Total Head In Meters	0	24	45	60	70	80	90
7	GSE-7/515	5	15	1/3	2	7500	33000		0	32	62	81	105	120	135
8	GSE-7/6518	6.5	18	1/3	2	8350	35850		0	38	74	97	126	144	162
9	GSE-7/7521	7.5	21	3	2	9700	40200		0	44	86	113	147	168	189
10	GSE-7/1030	10	30	3	2	12350	47500		0	63	123	162	210	240	270

## GSE - 10

Sr. No.	Model	H.P.	Stage	Phase	Outlet In Inch	For Pump Only	Pump Set (Complete Set)		DISCHARGE IN LPM						
									310	260	210	160	130	80	0
11	GSE-10/510	5	10	1/3	2	6450	31950	Total Head In Meters	0	24	45	60	70	80	90
12	GSE-10/6512	6.5	12	1/3	2	7000	34500		0	29	54	72	84	96	108
13	GSE-10/7515	7.5	15	3	2	8350	38850		0	36	68	90	105	120	135
14	GSE-10/1020	10	20	3	2	9850	45000		0	48	90	120	140	160	180



## V-5 मोटर रेट

Sr. No.	H.P.	Phase	Length	Kit	Price
1	3	1/3	250	17500	23300
2	5	1/3	300	18900	25500
3	6.5	1/3	340	20500	27500
4	7.5	3	400	21700	30500
5	10	3	450	25400	35150
6	12	3	500	30650	40800
7	15	3	550	33000	45000
8					

Cash Discount will be.....% on the Price List



# V-5 (CI-SS)(S.N.)(S.S.)

IS : 8034



CML3876686

**GOLD STAR ENGINEERS**

V-5 सबमर्शीबल SS बोडी पंप सेट CI-SS  
S.S. 304 बाउल, 410 इम्पेलर & नायलोन इम्पेलर  
125mm बोर, 38 फुट हेड

AN ISO 9001-2015  
Certified Company

## GSE - 30

Sr. No.	Model	H.P.	Stage	Phase	Outlet In Inch	Pump SS Only	Pump SS Nylon	Motor Rate	Total Head In Meters	DISCHARGE IN LPM						
										170	160	140	100	90	70	25
5	GSE-3010	3	10	1/3	2	15225	13950	23300	5	50	60	70	80	90	100	110
6	GSE-5016	5	16	1/3	2	22000	19900	25500	6	80	96	112	128	144	160	176
7	GSE-6520	6	20	1/3	2	26500	23925	27500	7	100	120	140	160	180	200	220
8	GSE-7524	7.5	24	3	2	31050	28150	30500	8	120	144	168	192	216	240	264
9	GSE-1032	10	32	3	2	40125	36800	35150	9	160	192	224	256	288	320	352
10	GSE-12540	12.5	40	3	2		45175	40800	10	200	240	280	320	360	400	440

## GSE - 40

Sr. No.	Model	H.P.	Stage	Phase	Outlet In Inch	Pump SS Only	Pump SS Nylon	Motor Rate	Total Head In Meters	DISCHARGE IN LPM						
										215	200	180	135	130	95	50
11	GSE-3007	3	7	1/3	2	11825	10875	23300	11	35	42	49	56	63	70	77
12	GSE-5012	5	12	1/3	2	17475	15950	25500	12	60	72	84	96	108	120	132
13	GSE-6015	6	15	1/3	2	20900	18950	27500	13	75	90	105	120	135	150	165
14	GSE-7518	7.5	18	3	2	24275	21950	30500	14	90	108	126	144	162	180	198
15	GSE-1024	10	24	3	2	31050	27975	35150	15	120	144	168	192	216	240	264
16	GSE-12530	12.5	30	3	2	38650	34775	40800	16	150	180	210	240	270	300	330

## GSE - 50

Sr. No.	Model	H.P.	Stage	Phase	Outlet In Inch	Pump SS Only	Pump SS Nylon	Motor Rate	Total Head In Meters	DISCHARGE IN LPM						
										240	230	200	170	160	130	80
17	GSE-3006	3	6	1/3	2	11375	10600	23300	17	30	36	42	48	54	60	66
18	GSE-5010	5	10	1/3	2	16375	15100	25500	18	50	60	70	80	90	100	110
19	GSE-6512	6	12	1/3	2	18875	17325	27500	19	60	72	84	96	108	120	132
20	GSE-7515	7.5	15	3	2	22575	20650	30500	20	75	90	105	120	135	150	165
21	GSE-1020	10	20	3	2	28900	26325	35150	21	100	120	140	160	180	200	220
22	GSE-12524	12.5	24	3	2	34600	31500	40800	22	120	144	168	192	216	240	264

## GSE - 60

Sr. No.	Model	H.P.	Stage	Phase	Outlet In Inch	Pump SS Only	Pump SS Nylon	Motor Rate	Total Head In Meters	DISCHARGE IN LPM						
										260	250	230	200	185	155	110
23	GSE-3005	3	5	1/3	2	10125		23300	23	25	30	35	40	45	50	55
24	GSE-5008	5	8	1/3	2	13850		25500	24	40	48	56	64	72	80	88
25	GSE-6510	6	10	1/3	2	16375		27500	25	50	60	70	80	90	100	110
26	GSE-7512	7.5	12	3	2	18875		30500	26	60	72	84	96	108	120	132
27	GSE-1016	10	16	3	2	23825		35150	27	80	96	112	128	144	160	176
28	GSE-12520	12.5	20	3	2	29775		40800	28	100	120	140	160	180	200	220





GSE - 60						Outlet - 2.5"							
Sr. No.	Model	H.P.	Stage	For Pump Only	Pump Set III - Phase	Total Head in Meters	DISCHARGE IN LPM						
							615	560	500	450	350	285	90
1	GSE-60-3005	3	5	10550	33850	0	7	20	25	30	35	40	
2	GSE-60-5008	5	8	14975	40475	0	10	30	40	50	56	65	
3	GSE-60-6.5010	6.5	10	18000	45500	0	12	37	50	62	70	81	
4	GSE-60-7.5012	7.5	12	20925	51425	0	15	45	60	75	84	98	
5	GSE-60-10016	10	16	26775	61925	0	20	60	80	100	112	130	

GSE - 80						Outlet - 2.5"							
Sr. No.	Model	H.P.	Stage	For Pump Only	Pump Set III - Phase	Total Head in Meters	DISCHARGE IN LPM						
							750	710	670	600	532	310	100
6	GSE-80-3003	3	4	9225	32525	0	5	10	15	20	28	32	
7	GSE-80-5006	5	6	12150	37650	0	7	14	21	28	42	49	
8	GSE-80-6.508	6.5	8	14975	42475	0	9	19	28	37	56	65	
9	GSE-80-7.5010	7.5	10	18000	48500	0	11	23	35	47	70	82	
10	GSE-80-10012	10	12	20925	56075	0	14	28	42	56	84	98	
11	GSE-80-12515	12.5	15	25300	66100	0	17	35	52	70	105	122	

GSE - 100						Outlet - 2.5"							
Sr. No.	Model	H.P.	Stage	For Pump Only	Pump Set III - Phase	Total Head in Meters	DISCHARGE IN LPM						
							800	760	715	645	600	425	250
6	GSE-100-3003	3	3	7775	31075	0	4	6	9	14	21	25	
7	GSE-100-5005	5	5	10550	36050	0	7	13	19	25	35	40	
8	GSE-100-6.506	6.5	6	12150	39650	0	8	15	23	30	42	48	
9	GSE-100-7.508	7.5	8	14975	45475	0	10	20	30	36	56	65	
10	GSE-100-1010	10	10	18000	53150	0	11	23	35	70	75	82	
11	GSE-100-12.512	12.5	12	20925	35150	0	14	28	45	60	84	98	

GSE - 125						Outlet - 2.5"							
Sr. No.	Model	H.P.	Stage	For Pump Only	Pump Set III - Phase	Total Head in Meters	DISCHARGE IN LPM						
							850	810	760	690	680	580	440
12	GSE-125-5004	5	4	9225	34725	0	5	10	15	20	28	32	
13	GSE-125-6.505	6.5	5	10550	38050	0	7	13	19	25	35	40	
14	GSE-125-7.506	7.5	6	12150	42650	0	8	15	23	30	42	48	
15	GSE-125-1008	10	8	14975	50150	0	10	20	30	56	64	76	
16	GSE-125-12510	12.5	10	20925	61725	0	11	23	35	70	80	95	

## GSE - 2

Outlet - 1.25"

Sr. No.	Model	H.P.	Stage	For Pump Only	Pump Set III - Phase	Total Head in Meters	DISCHARGE IN LPM						
							25	33	40	45	55	65	80
1	GSE-25045	5	45	22875	48375	279	234	211	180	144	99	54	
2	GSE-26550	6.5	50	25925	53425	310	292	235	200	130	110	60	
3	GSE-27555	7.5	55	28750	59250	341	321	258	220	143	121	66	

## GSE - 4

Outlet - 1.25"

Sr. No.	Model	H.P.	Stage	For Pump Only	Pump Set III - Phase	Total Head in Meters	DISCHARGE IN LPM						
							35	45	55	70	85	100	110
4	GSE-45040	5	40	20700	46200	228	194	178	160	120	80	44	
5	GSE-46545	6.5	45	22875	50375	256	218	200	180	135	90	50	
6	GSE-47550	7.5	50	25925	56425	284	242	222	200	150	100	55	
7	GSE-47560	7.5	60	31075	61575	340	290	266	240	180	120	66	
8	GSE-410060	10	60	31075	66225	340	290	266	240	180	120	66	

## GSE - 5

Outlet - 1.5"

Sr. No.	Model	H.P.	Stage	For Pump Only	Pump Set III - Phase	Total Head in Meters	DISCHARGE IN LPM						
							45	60	70	100	115	125	140
9	GSE-55035	5	35	20250	45750	198	175	157	140	105	70	38	
10	GSE-56540	6.5	40	22625	50125	226	200	180	160	120	80	44	
11	GSE-57545	7.5	45	25475	55975	254	225	246	180	135	90	50	
12	GSE-510055	10	55	31125	66275	310	275	275	220	165	110	61	
13	GSE-510060	10	60	33850	69000	340	290	266	240	180	120	66	

## GSE - 7

Outlet - 1.5"

Sr. No.	Model	H.P.	Stage	For Pump Only	Pump Set III - Phase	Total Head in Meters	DISCHARGE IN LPM						
							60	75	95	120	135	145	160
14	GSE-75030	5	30	17850	43350	168	150	134	120	90	60	33	
15	GSE-76535	6.5	35	20250	47750	196	175	156	140	126	84	46	
16	GSE-77540	7.5	40	22625	53125	224	200	178	160	144	96	52	
17	GSE-710050	10	50	28300	63450	280	250	222	200	180	120	65	

## GSE - 10

Outlet - 2.0"

Sr. No.	Model	H.P.	Stage	For Pump Only	Pump Set III - Phase	Total Head in Meters	DISCHARGE IN LPM						
							75	90	110	140	155	170	180
18	GSE-105025	5	25	15425	40925	140	125	112	100	75	50	30	
19	GSE-106530	6.5	30	17850	45350	168	150	134	120	90	60	33	
20	GSE-107535	7.5	35	20250	50750	196	210	188	140	126	84	56	
21	GSE-101045	10	45	25500	60650	252	225	200	180	162	108	59	

Cash Discount will be.....% on the Price List



# V-6

IS : 8034



CML3876686

**GOLD STAR ENGINEERS**

**V-6 सबमर्शीबल SS बोर्डी  
S.S. 304 बाउल, 410 इम्पेलेर  
165mm बोर, 50 फुट हेड**

AN ISO 9001-2015  
Certified Company

**GSE - 40 (D - 2)**

Outlet - 2"

Sr. No.	Model	H.P.	Stage	For Pump Only	Pump Set III - Phase	Total Head In Meters	DISCHARGE IN LPM						
							150	130	100	80	65	50	0
1	GSE-503007	3	7	14500	39000	35	49	70	84	90	98	102	
2	GSE-505012	5	12	21450	48450	60	84	120	144	155	168	174	
3	GSE-506514	6.5	14	24250	53750	70	98	140	168	180	195	203	
4	GSE-507518	7.5	18	29800	62800	90	125	180	216	232	250	261	
5	GSE-501024	10	24	38150	75150	120	167	240	288	310	335	348	
6	GSE-501230	12.5	30	46650	87150	150	210	300	360	395	415	430	

**GSE - 50 (D - 2)**

Outlet - 2"

Sr. No.	Model	H.P.	Stage	For Pump Only	Pump Set III - Phase	Total Head In Meters	DISCHARGE IN LPM						
							200	160	130	120	100	70	0
8	GSE-503006	3	6	13225	37725	0	54	66	72	79	84	99	
9	GSE-505010	5	10	18950	45950	0	90	110	120	132	140	165	
10	GSE-506512	6.5	12	21800	51300	0	108	132	144	158	168	198	
11	GSE-507515	7.5	15	26100	59100	0	135	165	180	198	210	248	
12	GSE-501020	10	20	33250	70250	0	180	220	240	264	280	330	
13	GSE-5012525	12.5	25	40450	80950	0	225	275	300	330	350	413	
14	GSE-501530	15	30	47650	92650	0	270	330	360	396	420	495	

**GSE - 60 (D - 2)**

Outlet - 2"

Sr. No.	Model	H.P.	Stage	For Pump Only	Pump Set III - Phase	Total Head In Meters	DISCHARGE IN LPM						
							270	190	170	150	130	100	0
15	GSE-603005	3	5	11800	36300	0	45	55	60	66	70	83	
16	GSE-605008	5	8	16100	43100	0	72	88	96	106	112	132	
17	GSE-606510	6.5	10	18950	48450	0	90	110	120	132	140	165	
18	GSE-607512	7.5	12	21800	54800	0	108	132	144	158	168	198	
19	GSE-601016	10	16	27500	64500	0	144	176	192	211	224	264	
20	GSE-6012520	12.5	20	32250	73750	0	180	220	240	264	280	330	
21	GSE-601524	15	24	39000	84000	0	216	264	288	317	336	396	
22	GSE-6017528	17.5	28	44750	93750	0	252	308	336	370	392	462	
23	GSE-602033	20	30	50550	104300	0	270	330	360	396	420	495	

Cash Discount will be.....% on the Price List

**GSE - 80 (D - 2)**

Outlet - 2"

Sr. No.	Model	H.P.	Stage	For Pump Only	Pump Set III - Phase	Total Head In Meters	DISCHARGE IN LPM						
							330	250	220	210	180	150	0
24	GSE-803004	3	4	10750	35250	0	36	44	48	53	56	66	
25	GSE-805006	5	6	13800	40800	0	54	66	72	79	84	99	
26	GSE-806508	6.5	8	16850	46350	0	72	88	96	106	112	132	
27	GSE-807510	7.5	10	19875	52875	0	90	110	120	132	140	165	
28	GSE-801012	10	12	22900	59900	0	108	132	144	158	168	198	
29	GSE-8012525	12.5	15	27450	67950	0	135	165	180	198	210	248	
30	GSE-801518	15	18	32050	77050	0	162	198	216	238	252	297	
31	GSE-8017521	17.5	21	36350	85350	0	189	231	252	277	294	347	
32	GSE-802024	20	24	41000	94700	0	216	264	288	317	336	396	
33	GSE-802530	25	30	50300	109800	0	270	330	360	396	420	495	

**GSE - 100 (D - 2)**

Outlet - 2"

Sr. No.	Model	H.P.	Stage	For Pump Only	Pump Set III - Phase	Total Head In Meters	DISCHARGE IN LPM						
							450	340	280	260	220	180	0
34	GSE-1003003	3	3	9350	33850	0	27	33	36	40	42	50	
35	GSE-1005005	5	5	12425	39425	0	45	55	60	66	70	83	
36	GSE-1006006	6.5	6	14050	43550	0	54	66	72	79	84	99	
37	GE-100-78	7.5	8	17200	50200	0	72	88	96	106	112	132	
38	GSE-1001010	10	10	20350	57350	0	90	110	120	132	140	165	
39	GSE-10012512	12.5	12	23450	63950	0	108	132	144	158	168	198	
40	GSE-1001515	15	15	28150	73150	0	135	165	180	198	210	248	
41	GSE-10017518	17.5	18	32825	81825	0	162	198	216	238	252	297	
42	GSE-1002020	20	20	36000	89750	0	180	220	240	264	280	330	
43	GSE-1002525	25	25	43900	103400	0	225	275	300	330	350	413	

**GSE - 125 (D - 2.5)**

Outlet - 2.5"

Sr. No.	Model	H.P.	Stage	For Pump Only	Pump Set III - Phase	Total Head In Meters	DISCHARGE IN LPM						
							550	420	350	330	270	200	0
44	GE-125-54	5	4	11200	38200	0	33	43	48	54	58	71	
45	GSE-1256505	6.5	5	12900	42400	0	45	55	60	66	70	83	
46	GSE-1257506	7.5	6	14500	47500	0	54	66	72	79	84	99	
47	GSE-1251008	10	8	17750	54750	0	72	88	96	106	112	132	
48	GSE-12512510	12.5	10	21025	61525	0	90	110	120	132	140	165	
49	GSE-1251512	15	12	24350	69350	0	108	132	144	158	168	198	
50	GSE-12517514	17.5	14	27600	76600	0	126	154	168	185	196	231	
51	GSE-1252016	20	16	30850	84600	0	144	176	192	211	224	264	
52	GSE-1252520	25	20	37450	96950	0	180	220	240	264	280	330	

Cash Discount will be.....% on the Price List

**GSE - 150 (D - 2.5)**

Outlet - 2.5"

Sr. No.	Model	H.P.	Stage	For Pump Only	Pump Set III - Phase	Total Head In Meters	DISCHARGE IN LPM						
							660	480	430	400	360	300	0
53	GSE-1503002	3	2	8100	32600	0	18	22	24	26	28	33	
54	GSE-1505003	5	3	9850	36850	0	27	33	36	40	42	50	
55	GSE-1506504	6.5	4	11600	41100	0	36	44	48	53	56	66	
56	GSE-1507505	7.5	5	13300	46300	0	45	55	60	66	70	83	
57	GSE-1501006	10	6	15025	52025	0	54	66	72	79	84	99	
58	GSE-15012508	12.5	8	18500	59000	0	72	88	96	106	112	132	
59	GSE-15015010	15	10	22000	67000	0	90	110	120	132	140	165	
60	GSE-15017512	17.5	12	25450	74450	0	108	132	144	158	168	198	
61	GSE-1502013	20	13	27200	80950	0	117	143	156	172	182	215	
62	GSE-1502517	25	17	34400	93900	0	153	187	204	224	238	281	

**GSE - 200 (D - 2.5)**

Outlet - 2.5"

Sr. No.	Model	H.P.	Stage	For Pump Only	Pump Set III - Phase	Total Head In Meters	DISCHARGE IN LPM						
							750	520	440	510	380	330	0
63	GSE-2006503	6.5	3	10100	39600	0	27	33	36	40	42	50	
64	GSE-2007504	7.5	4	11825	44825	0	36	44	48	53	56	66	
65	GSE-2001005	10	5	13600	50600	0	45	55	60	66	70	83	
66	GSE-20012506	12.5	6	15350	55850	0	54	66	72	79	84	99	
67	GSE-2001508	15	8	18900	63900	0	72	88	96	106	112	132	
68	GSE-20017509	17.5	9	20700	69700	0	81	99	108	119	126	149	
69	GSE-2002010	20	10	22500	76250	0	90	110	120	132	140	165	
70	GSE-2002512	25	11	26000	85500	0	99	121	132	145	154	182	

**GSE - 250 (D - 2.5)**

Outlet - 2.5"

Sr. No.	Model	H.P.	Stage	For Pump Only	Pump Set III - Phase	Total Head In Meters	DISCHARGE IN LPM						
							850	790	675	600	400	250	100
71	GSE-2505002	5	2	8400	35400	6	10	18	24	26	28	30	
72	GSE-2507503	7.5	3	10150	43150	9	15	27	36	39	42	45	
73	GSE-2501004	10	4	11950	48950	12	20	36	48	52	56	80	
74	GSE-25012505	12.5	5	13800	54300	15	25	54	72	78	84	90	
75	GSE-2501506	15	6	15600	60600	18	30	54	72	78	84	90	
76	GSE-25017507	17.5	7	17400	66400	21	35	63	84	91	98	105	
77	GSE-2502008	20	8	19200	72950	24	40	72	96	104	112	120	
78	GSE-25025010	25	10	22550	82050	30	50	90	120	130	140	150	

**GOLD STAR ENGINEERS**

V-6 सबमर्शीबल SS बोडी पंप K टाइप  
CI बाउल, S.S. 410 इम्पे्लर,  
CI बाउल नोरील इम्पे्लर, S.S. जेकेट बाउल नोरील इम्पे्लर,  
165 mm बोर

AN ISO 9001-2015  
Certified Company

50 Feet Head Radial Flow						Only Pump		
Sr. No.	Model	H.P.	Stage	Outlet	Only Motor	CI Bowl SS 410 Impeller	CI Bowl Noryl Impeller	SS 202 Bowl SS Impeller
1	GSE-150-3002	3	2	2.50	24500	6200	5675	6600
2	GSE-100-3003	3	3	2.00	24500	6850	6225	7450
3	GSE-80-3004	3	4	2.00	24500	7600	6775	8475
4	GSE-60-3005	3	5	2.00	24500	8300	7350	9100
5	GSE-50-3006	3	6	2.00	24500	9050	7975	10050
6	GSE-150-5003	5	3	2.50	27000	7125	6425	7800
7	GSE-125-5004	5	4	2.00	27000	7675	7025	8800
8	GSE-100-5005	5	5	2.00	27000	8575	7575	9500
9	GSE-80-5006	5	6	2.00	27000	9225	8100	10500
10	GSE-60-5008	5	8	2.00	27000	10650	9225	11900
11	GSE-50-5010	5	10	2.00	27000	12225	10500	13750
12	GSE-200-6003	6.5	3	2.50	29500	7400	6575	-
13	GSE-150-6004	6.5	4	2.50	29500	8150	7150	8825
14	GSE-125-6005	6.5	5	2.00	29500	8850	7725	9850
15	GSE-100-6006	6.5	6	2.00	29500	9400	8225	10500
16	GSE-80-6008	6.5	8	2.00	29500	10850	9400	12500
17	GSE-60-6010	6.5	10	2.00	29500	12225	10500	13750
18	GSE-50-6012	6.5	12	2.00	29500	13825	11725	15625
19	GSE-200-7504	7.5	4	2.50	33000	8425	7375	-
20	GSE-150-7505	7.5	5	2.50	33000	9000	7925	9925
21	GSE-125-7506	7.5	6	2.00	33000	9700	8450	10975
22	GSE-100-7508	7.5	8	2.00	33000	11125	9600	12500
23	GSE-80-7510	7.5	10	2.00	33000	12500	10700	14550
24	GSE-60-7512	7.5	12	2.00	33000	13825	11725	15625
25	GSE-50-7515	7.5	15	2.00	33000	16200	13675	18425



# V-6

IS : 8034



CML3876686

**GOLD STAR ENGINEERS**

**V-6** सबमशीबल S.S.बोडी पंप K टाइप  
**CI** बाउल, **S.S. 410** इम्पे्लर,  
**CI** बाउल नोरील इम्पे्लर, **S.S.** जेकेट बाउल नोरील इम्पे्लर,  
**165 mm** बोर

AN ISO 9001-2015  
 Certified Company

50 Feet Head Radial Flow						Only Pump		
Sr. No.	Model	H.P.	Stage	Outlet	Only Motor	CI Bowl SS 410 Impeller	CI Bowl Noryl Impeller	SS 202 Bowl SS Impeller
26	GSE-200-1005	10	5	2.50	37000	9450	8150	-
27	GSE-150-1007	10	7	2.50	37000	10875	9350	12200
28	GSE-125-1008	10	8	2.00	37000	11475	9850	13175
29	GSE-100-1010	10	10	2.00	37000	12800	10925	14550
30	GSE-80-1012	10	12	2.00	37000	14150	12000	16600
31	GSE-60-1016	10	16	2.00	37000	13825	14350	19400
32	GSE-200-12506	12.5	6	2.50	40500	10450	8950	-
33	GSE-150-12508	12.5	8	2.50	40500	11800	10100	13275
34	GSE-125-12510	12.5	10	2.00	40500	13250	11250	16675
35	GSE-100-12512	12.5	12	2.00	40500	14500	12275	17000
36	GSE-80-12515	12.5	15	2.00	40500	16675	13975	19800
37	GSE-200-1508	15	8	2.50	45000	12500	10550	-
38	GSE-150-1510	15	10	2.50	45000	13650	11600	15550
39	GSE-125-1512	15	12	2.00	45000	15050	12680	17575
40	GSE-100-1515	15	15	2.00	45000	17050	14300	19675
41	GSE-80-1518	15	18	2.00	45000	-	-	-
42	GSE-200-17509	17.5	9	2.50	49000	13525	11350	-
43	GSE-150-17512	17.5	12	2.50	49000	15500	13100	17750
44	GSE-125-17514	17.5	14	2.00	49000	18050	15300	20650
45	GSE-200-2010	20	10	2.50	53700	14550	12200	-
46	GSE-150-2013	20	13	2.50	53700	16450	13850	18875
47	GSE-125-2016	20	16	2.00	53700	20200	16700	23175

Cash Discount will be.....% on the Price List



**GSE - SS-60) (D-2)**

Outlet - 2"

Sr. No.	Model	H.P.	Stage	For Pump Only	Pump Set III - Phase	Total Head in Meters	DISCHARGE IN LPM							
							140	130	110	90	80	70	50	30
1	GSE-60 3005	3	5	14050	38550	45	50	60	75	80	85	90	95	
2	GSE-60 5008	5	8	18950	45950	72	80	96	120	128	136	144	152	
3	GSE-60 6010	6	10	22175	51675	90	100	120	150	160	170	180	190	
4	GSE-60 7512	7.5	12	25475	58475	108	120	144	180	192	204	216	228	
5	GSE-60 1016	10	16	32000	68000	144	160	92	240	256	272	288	304	
6	GSE-60 1220	12.5	20	38550	79050	180	200	240	300	320	340	360	380	
7	GSE-60 1524	15	24	45175	90175	216	240	288	405	384	408	432	456	

**GSE - SS-80) (D-2)**

Outlet - 2"

Sr. No.	Model	H.P.	Stage	For Pump Only	Pump Set III - Phase	Total Head in Meters	DISCHARGE IN LPM							
							215	205	180	145	130	115	100	70
8	GSE-803004	3	4	13025	37525	36	40	48	60	64	68	72	76	
9	GSE-805006	5	6	16575	43575	54	60	72	90	96	102	108	114	
10	GSE-806508	6.5	8	20150	49650	72	80	96	120	128	136	144	152	
11	GSE-807510	7.5	10	23725	56725	90	100	120	150	160	170	180	190	
12	GSE-801012	10	12	27300	64300	108	120	144	180	192	204	216	228	
13	GSE-8012515	12.5	15	32675	73175	135	150	180	225	240	255	270	285	
14	GSE-801518	15	18	38000	83000	162	180	216	270	288	306	324	342	
15	GSE-8017522	17.5	22	45175	94175	198	220	264	330	352	374	396	418	
16	GSE-802025	20	25	50600	104350	225	250	300	375	400	425	450	475	

**GSE - SS-100) (D-2)**

Outlet - 2"

Sr. No.	Model	H.P.	Stage	For Pump Only	Pump Set III - Phase	Total Head in Meters	DISCHARGE IN LPM							
							290	275	240	195	175	160	140	110
17	GSE-1003003	3	3	11225	35725	27	30	36	45	48	51	54	57	
18	GSE-1005005	5	5	14775	41775	45	50	60	75	80	85	90	95	
19	GSE-1006506	6.5	6	16575	46075	54	60	72	90	96	102	108	114	
20	GSE-1007508	7.5	8	20150	53150	72	80	96	120	128	136	144	152	
21	GSE-1001010	10	10	23725	60725	90	100	120	150	160	170	180	190	
22	GSE-10012512	12.5	12	27300	67800	108	120	144	180	192	204	216	228	
23	GSE-1001515	15	15	32675	77675	135	150	180	225	240	255	270	285	
24	GSE-10017518	17.5	18	38000	87000	162	180	216	270	288	306	324	342	
25	GSE-1002020	20	20	41575	95325	180	200	240	300	320	340	360	380	
26	GSE-1002525	25	25	50600	110100	225	250	300	375	400	425	450	475	



**GOLD STAR ENGINEERS**

# V-6 / 70 Fit

V-6 सबमर्शीबल SS बोडी  
S.S. 304 बाउल, 304 इम्पेलर  
165mm बोर, 70 फुट हेड

IS : 8034



CML3876686

AN ISO 9001-2015  
Certified Company

## GSE - SS-125) (D-2.5)

Outlet - 2.5"

Sr. No.	Model	H.P.	Stage	For Pump Only	Pump Set III - Phase	Total Head in Meters	DISCHARGE IN LPM							
							325	360	330	270	250	225	205	170
27	GSE-1255004	5	4	13250	40250	36	40	48	60	64	68	72	76	
28	GSE-1256505	6.5	5	15150	44650	45	50	60	75	80	85	90	95	
29	GSE-1257506	7.5	6	17000	50000	54	60	72	90	96	102	108	114	
30	GSE-1251008	10	8	20650	57650	72	80	96	120	128	136	144	152	
31	GSE-12512510	12.5	10	24375	64875	90	100	120	150	160	170	180	190	
32	GSE-1251512	15	12	28050	73050	108	120	144	180	192	204	216	228	
33	GSE-12517514	17.5	14	31800	80800	126	140	168	210	224	238	252	266	
34	GSE-1252016	20	16	35525	89275	144	160	192	240	256	272	288	304	
35	GSE-1252520	25	20	42950	102450	180	200	240	300	320	340	360	380	

## GSE - SS-150) (D - 2.5)

Outlet - 2.5"

Sr. No.	Model	H.P.	Stage	For Pump Only	Pump Set III - Phase	Total Head in Meters	DISCHARGE IN LPM							
							440	415	390	315	290	265	240	200
36	GSE-1503002	3	2	9550	34050	18	20	24	30	32	34	36	38	
37	GSE-1505003	5	3	11400	38400	27	30	36	45	48	51	54	57	
38	GSE-1506504	6.5	4	13250	42750	36	40	48	60	64	68	72	76	
39	GSE-1507505	7.5	5	15150	48150	45	50	60	75	80	85	90	95	
40	GSE-1501007	10	7	18875	55875	63	70	84	105	112	119	126	133	
41	GSE-15012508	12.5	8	20650	61150	72	80	96	120	128	136	144	152	
42	GSE-15015010	15	10	24400	69400	90	100	120	150	160	170	180	190	
43	GSE-15017512	17.5	12	28100	77100	108	120	144	180	192	204	216	228	
44	GSE-1502013	20	13	29950	83700	117	130	156	195	208	221	234	247	
45	GSE-1502516	25	16	35525	95025	144	160	192	240	256	272	288	304	

## GSE - SS-200) (D - 2.5)

Outlet - 2.5"

Sr. No.	Model	H.P.	Stage	For Pump Only	Pump Set III - Phase	Total Head in Meters	DISCHARGE IN LPM							
							600	580	535	435	400	370	335	300
46	GSE-2006003	6	3	11775	41275	27	30	36	45	48	51	54	57	
47	GSE-2007504	7.5	4	13700	46700	36	40	48	60	64	64	72	76	
48	GSE-2001005	10	5	15375	52375	45	50	60	75	80	85	90	95	
49	GSE-20012506	12.5	6	17575	58075	54	60	72	90	96	102	108	114	
50	GSE-2001508	15	8	21450	66450	72	80	96	120	128	136	144	152	
51	GSE-20017509	17.5	9	23375	72375	81	90	108	135	144	153	162	171	
52	GSE-2002010	20	10	25300	79050	90	100	120	150	160	170	180	190	
53	GSE-2002512	25	12	29275	88775	108	120	144	180	192	204	216	228	

Cash Discount will be.....% on the Price List



# V-6 Q Type Mix Flow

IS : 8034



CML3876686

**GOLD STAR ENGINEERS**

V-6 सबमशीबल SS बोडी Q - टाइप मीक्स फ्लो  
CI बाउल, 410 SS इम्पे्लर  
165mm बोर, 38 फुट हेड

AN ISO 9001-2015  
Certified Company

## GSE - Q-262 (D - 2.5)

Outlet - 2.5"

Sr. No.	Model	H.P.	Stage	For Pump Only	Pump Set III - Phase	Total Head In Meters	DISCHARGE IN LPM								
							320	360	410	460	500	710	790	835	880
1	GSE-100-3003	3	3	7350	31850		25	23	22	20	19	10	7	5	3
2	GSE-100-5005	5	5	10425	37425		41	39	37	34	31	17	12	8	4
3	GSE-100-6006	6	6	11875	41375		49	47	44	41	37	20	14	9	4
4	GSE-100-7.508	7.5	8	14925	47925		66	62	58	54	50	16	18	12	5
5	GSE-100-10010	10	10	17600	54600		82	78	73	68	62	33	23	15	6
6	GSE-100-12.512	12.5	12	21050	61550		98	94	88	82	74	40	28	17	6
7	GSE-100-15015	15	15	25600	70600		123	117	110	102	90	50	35	23	9
8	GSE-100-17.517	17.5	18	30050	79050		139	133	124	116	105	56	39	26	10
9	GSE-100-2020	20	20	33075	86825		154	156	146	136	124	66	46	30	11

## GSE - Q-262 (D - 2.5)

Outlet - 2.5"

Sr. No.	Model	H.P.	Stage	For Pump Only	Pump Set III - Phase	Total Head In Meters	DISCHARGE IN LPM								
							300	410	440	490	540	610	650	725	850
10	GSE-125-5004	5	4	8800	35800		41	37	35	33	31	27	25	20	11
11	GSE-125-6005	6	5	10400	39900		51	46	44	42	39	33	31	25	14
12	GSE-125-7.506	7.5	6	11875	44875		61	55	53	50	47	40	37	30	17
13	GSE-125-1008	10	8	14925	51925		81	73	71	67	63	53	49	40	23
14	GSE-125-12.510	12.5	10	17975	58425		102	92	88	83	78	67	62	50	29
15	GSE-125-15012	15	12	21050	66050		122	110	106	100	94	80	74	60	35
16	GSE-125-17.514	17.5	14	23975	72975		142	128	124	117	110	93	86	70	40
17	GSE-125-2016	20	16	26975	80725		163	147	141	133	125	107	99	80	46

## GSE - Q-273 (D - 2.5)

Outlet - 2.5"

Sr. No.	Model	H.P.	Stage	For Pump Only	Pump Set III - Phase	Total Head In Meters	DISCHARGE IN LPM								
							300	490	550	650	730	840	920	950	1020
18	GSE-150-5003	5	3	7925	34925		30	27	26	23	21	18	15	11	9
19	GSE-150-6004	6	4	9575	39075		40	36	34	31	28	24	20	15	12
20	GSE-150-7.505	7.5	5	11375	44375		50	45	43	39	35	30	25	19	15
21	GSE-150-1007	10	7	13050	50050		70	63	60	55	49	42	35	27	21
22	GSE-150-12.58	12.5	8	14725	55225		80	72	68	62	56	48	40	31	24
23	GSE-150-1510	15	10	16450	61450		100	90	85	78	70	50	50	39	30
24	GSE-150-17.512	17.5	12	19925	68925		120	108	102	94	84	72	60	46	36
25	GSE-150-2014	20	14	26800	80850		130	117	111	101	98	78	65	50	39
26	GSE-150-2516	25	16	30200	89700		160	144	136	125	112	96	80	62	48

Cash Discount will be.....% on the Price List

## GSE - Q-302 (D - 3)

Outlet - 3"

Sr. No.	Model	H.P.	Stage	For Pump Only	Pump Set III - Phase	Total Head In Meters	DISCHARGE IN LPM							
							455	550	640	700	850	980	1100	1150
27	GSE-200-6003	6	3	8050	37500	32	30	29	27	24	21	18	15	9
28	GSE-200-7.504	7.5	4	9700	42700	42	40	38	36	32	28	23	20	11
29	GSE-200-1005	10	5	11550	48550	53	50	48	45	40	35	30	25	15
30	GSE-200-12.56	12.5	6	13200	53700	64	60	58	54	48	42	36	30	18
31	GSE-200-1508	15	8	16675	61675	74	70	67	63	56	49	42	35	21
32	GSE-200-17.59	17.5	9	18525	67525	95	90	86	81	72	63	54	45	27
33	GSE-200-2010	20	10	20175	73925	106	100	96	90	80	70	60	50	30
34	GSE-200-2512	25	12	23700	83200	127	120	115	108	96	84	72	60	36

## GSE - Q-302 (D - 3)

Outlet - 3"

Sr. No.	Model	H.P.	Stage	For Pump Only	Pump Set III - Phase	Total Head In Meters	DISCHARGE IN LPM							
							300	600	780	850	1000	1050	1200	1350
35	GSE-250-5002	5	2	6725	33725	26	22	21	20	17	16	13	10	7
36	GSE-250-7.503	7.5	3	8550	41550	39	33	31	30	26	25	20	15	10
37	GSE-250-1004	10	4	10375	47375	52	44	41	40	35	33	27	20	13
38	GSE-250-12.55	12.5	5	12300	52800	65	55	52	50	43	42	33	25	17
39	GSE-250-1506	15	6	14100	59400	78	66	62	60	52	50	40	30	20
40	GSE-250-17.57	17.5	7	15950	64950	91	77	72	70	61	58	47	35	23
41	GSE-250-2008	20	8	17900	71650	105	88	83	80	69	67	53	40	27
42	GSE-250-2510	25	10	21700	81200	130	110	103	100	87	83	67	50	33



## V-6 सबमर्शीबल मोटर & स्लीम (थ्री फेस & सींगल फेस)

(S.S. Body, 165mm Bore Dia.)

Sr. No.	H.P.	Phase	KW	V-6 Turbo	V-6 SS Motor	SU Model
1	3	1/3	2.2	24500		24500
2	5	1/3	3.7	27000		27000
3	6.5	1/3	4.4	29500		29500
4	7.5	1/3	5.9	33000		33000
5	10	3	7.3	37000		37000
6	12.5	3	8.8	40500		40500
7	15	3	10.9	45000		45000
8	17.5	3	12.7	49000		49000
9	20	3	14.6	53750		53750
10	25	3	17.2	59500		59500
11	30	3	22	68000		68000



Cash Discount will be.....% on the Price List



# V-6 / V-8

IS : 8034



CML3876686

**GOLD STAR ENGINEERS**

V-6/V-8 सबमशीबल SS बोडी Q- टाइप  
CI बाउल, 410 SS इम्पे्लर  
60 फुट हेड

AN ISO 9001-2015  
Certified Company

## GSE - 250 (D - 3)

Outlet - 3"

Sr. No.	Model	H.P.	Stage	For Pump Only	Pump Set III - Phase	Total Head In Meters	DISCHARGE IN LPM						
							1400	1250	1150	950	850	700	500
1	GSE-Q250-5002	5	2	9400	36400	0	10	12	16	20	22	28	
2	GSE-Q250-7503	7.5	3	12250	45250	0	15	18	24	30	33	42	
3	GSE-Q250-1004	10	4	14850	51850	0	20	24	32	40	44	56	
4	GSE-Q250-12505	12.5	5	17725	58225	0	25	30	40	50	55	70	
5	GSE-Q250-1506	15	6	20525	65525	0	30	36	48	60	66	84	
6	GSE-Q250-2008	20	8	26025	79775	0	40	48	64	80	88	112	
7	GSE-Q250-2510	25	10	31450	90950	0	50	60	80	100	110	140	

## GSE - 300 (D - 3)

Outlet - 3"

Sr. No.	Model	H.P.	Stage	For Pump Only	Pump Set III - Phase	Total Head In Meters	DISCHARGE IN LPM						
							1500	1350	1250	1050	950	800	600
8	GSE-Q300-	6	2	9400	38900	0	10	12	16	20	22	28	
9	GSE-Q300-1003	10	3	12250	49250	0	15	18	24	30	33	42	
10	GSE-Q300-12504	12.5	4	14850	55350	0	20	24	32	40	44	56	
11	GSE-Q300-1505	15	5	17725	62725	0	25	30	40	50	55	70	
12	GSE-Q300-2006	20	6	20525	74275	0	30	36	48	60	66	84	
13	GSE-Q300-2508	25	8	26025	85525	0	40	48	64	80	88	112	

## GSE - 400 (D - 3)

Outlet - 3"

Sr. No.	Model	H.P.	Stage	For Pump Only	Pump Set III - Phase	Total Head In Meters	DISCHARGE IN LPM						
							1600	1450	1350	1150	1050	900	700
13	GSE-Q400-7502	7.5	2	9500	42500	0	10	12	16	20	22	28	
14	GSE-Q400-12503	12.5	3	12375	52875	0	15	18	24	30	33	42	
15	GSE-Q400-1504	15	4	14950	59950	0	20	24	32	40	44	56	
16	GSE-Q400-2005	20	5	17775	71525	0	25	30	40	50	55	70	
17	GSE-Q400-2506	25	6	20700	80200	0	30	36	48	60	66	84	

## GSE - 500 (D - 3/4)

Outlet - 3"

Sr. No.	Model	H.P.	Stage	For Pump Only	Pump Set III - Phase	Total Head In Meters	DISCHARGE IN LPM						
							1600	1550	1450	1350	1275	1200	1050
13	GSE-Q500-5001	5	1	6950	33950	8	9	10	11	12	13	14	
14	GSE-Q500-1002	10	2	9600	46600	16	18	20	22	24	26	29	
15	GSE-Q500-1503	15	3	12400	57400	24	27	30	33	36	39	44	
16	GSE-Q500-2004	20	4	15100	68850	32	36	40	44	48	52	58	
17	GSE-Q500-2505	25	5	17975	77475	40	45	50	55	60	65	73	

Cash Discount will be.....% on the Price List

# Flow Gold<sup>®</sup>

PUMP

**GOLD STAR ENGINEERS**

# Openwell

IS : 14220



CML3876787

**V-7 मीनी ओपनवेल S.S. बोडी**

AN ISO 9001-2015  
Certified Company

## V-7 मीनी ओपनवेल

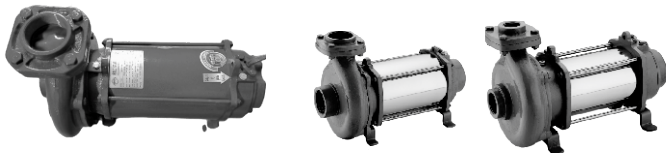
Total Head In Meter

Sr. No.	Model	H.P.	Phase	Outlet	Price	Total Head In Feet																
						Total Head In Meter																
						6	8	10	12	15	18	20	22	25	26	27	28	30	33	35	38	
						20	26	33	39	49	59	66	72	82	85	89	92	98	108	115	125	
1	GSE-0512	0.5	1	1 X 1	7000	120	110	100	75	50	25	-	-	-	-	-	-	-	-	-	-	
2	GSE-1025	1	1/3	1.25 X 1	11700	200	190	180	170	160	145	130	115	100	80	60	30					
3	GSE-1522	1.5	1/3	1.5 X 1.5	13340	300	250	230	220	200	175	160	140	120	100	80	70	50				
4	GSE-2020	2	1/3	2.5 X 2.5	15000	700	670	660	600	500	480	450	300	150								
5	GSE-2025	2	1/3	2 X 2	15000	420	390	370	350	325	300	260	230	180	160	130	110	40				
6	GSE-3024	3	1/3	2.5 X 2	16700	700	680	560	530	480	430	390	350	270	240	150	100					
7	GSE-3030	3	1/3	2 X 2	16950	450	440	430	425	420	410	400	370	340	310	280	265	250	150	100		
8	GSE-5024	5	1/3	2.5 X 2	18350	725	700	670	660	630	570	510	420	300	280	210	180	100				
9	GSE-5035	5	1/3	2 X 2	18650	500	490	480	470	460	455	450	430	400	370	350	320	300	260	180		

## V-9 होरीजन्टल ओपनवेल सींगल फेस & थ्री फेस S.S. बोडी

Total Head In Meter

Sr. No.	Model	H.P.	Phase	Outlet	Price	Total Head In Feet																	
						Total Head In Meter																	
						6	8	10	12	15	18	20	22	25	26	28	30	33	35	38	40	50	55
						20	26	33	39	49	59	66	72	82	85	92	98	108	115	125	131	160	180
1	GSE-3020	3	3	2.5 X 2.5	24700	1300	1050	900	750	650	600	500	300	200	100	-	-	-	-	-	-	-	-
2	GSE-3026	3	3	2.5 X 2	24900	725	700	630	570	500	470	440	410	350	325	240							
3	GSE-5015	5	3	3 X 3	26350	1600	1500	1440	1280	1000	750	420											
4	GE-56565	5	3	2.5 X 2.5	26250	1325	1300	1260	1210	1130	1030	950	860	715	660	525	175						
5	GSE-5036	5	3	2.5 X 2	26600	800	790	780	775	770	760	750	725	700	650	600	550	450	375	200			
6	GSE-6028	6.5	3	2.5 X 2.5	28900	1375	1350	1325	1300	1275	1250	1225	1200	1050	1000	890	750	400	100				
7	GSE-6033	6.5	3	2.5 X 2	29100	775	750	725	700	690	680	675	670	650	625	550	525	500	350				
8	GSE-7020	7.5	3	4 X 4	34800	2200	2000	1900	1800	1700	1600	1500	1200	800	600								
9	GSE-7028	7.5	3	3 X 3	32300	1680	1670	1660	1651	1575	1490	1426	1360	1240	1190	1100	975	760	500				
10	GSE-733	7.5	3	2.5 X 2.5	32100	1340	1313	1300	1290	1270	1250	1240	1225	1205	1180	1100	1020	860	660	350			
11	GSE-7542	7.5	3	2.5 X 2	33400	778	750	740	735	730	720	710	700	690	680	670	665	660	620	600	550	325	
12	GSE-1025	10	3	4 X 4	40500	2400	2400	2375	2100	1875	1700	1600	1400	1250	1100	800	725						
13	GSE-1030	10	3	3 X 3	38550	1700	1690	1680	1670	1650	1600	1550	1525	1300	1250	1150	1125	1000	900	700	550		
14	GSE-1050	10	3	2.5 X 2.5	39750	925	925	900	895	894	893	892	891	890	885	880	875	870	800	775	750	500	300
15	GSE-1230	12	3	3 X 3	46000	2100	2000	1950	1900	1800	1700	1600	1550	1300	1225	1150	1100	950	850				
16	GSE-1250	12	3	2.5 X 2.5	46500	1250	1225	1200	1180	1170	1160	1150	1140	1130	1120	1110	1100	1050	1000	975	950	700	525
17	GSE-1555 CI	15	3	2.5 X 2.5	62500	1350	1330	1320	1310	1290	1275	1270	1260	1250	1230	1220	1210	1200	1150	1125	1100	900	750



Cash Discount will be.....% on the Price List



# V-9 Openwell (MS)

IS : 14220



CML3876787

**GOLD STAR ENGINEERS**

AN ISO 9001-2015  
Certified Company

## V-7 C.I. मीनी ओपनवेल

Sr. No.	Model	H.P.	Phase	Outlet	Price	Total Head In Meter																				
						Total Head In Feet																				
						6	8	10	12	15	18	20	22	25	26	27	28	30	33	35	38	40				
1	GSE-3026	3	1/3	2.5 X 2	19500	700	680	560	530	480	430	390	350	270	240	150	100	-								
2	GSE-5026	5	1/3	2.5 X 2	21825	725	700	670	660	630	570	510	420	300	280	210	180	100								

## V-9 होरीजन्टल थ्री फेस सबमर्शीबल MS बोडी

### V-9 MS ओपनवेल

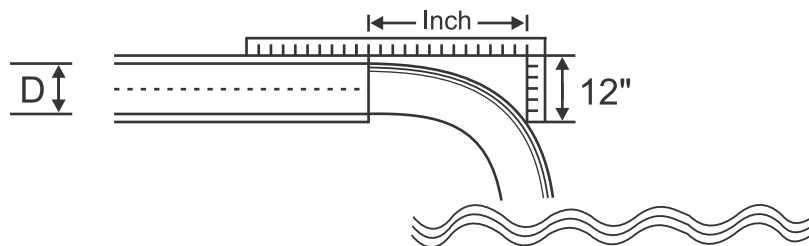
Sr. No.	Model	H.P.	Phase	Outlet	Price	Total Head In Meter																				
						Total Head In Feet																				
						6	8	10	12	15	18	20	22	25	26	27	28	30	33	35	38	40	50			
1	GSE-3020	3	3	2.5 X 2.5	24800	1300	1050	900	750	650	600	500	300	200	100	-	-	-	-	-	-	-	-	-	-	-
2	GSE-3026	3	3	2.5 X 2	25000	725	700	630	570	500	470	440	410	3500	325	240	-	-	-	-	-	-	-	-	-	-
3	GSE-5015	5	3	3 X 3	27250	1600	1500	1440	1280	1000	750	420	-	-	-	-	-	-	-	-	-	-	-	-	-	-
4	GSE-5022	5	3	2.5 X 2.5	27200	1325	1300	1260	1210	1130	1030	950	860	715	660	525	175	-	-	-	-	-	-	-	-	-
5	GSE-5036	5	3	2.5 X 2	27250	800	790	780	775	770	760	750	725	700	650	600	550	450	375	300	200	200	200	200	200	200
6	GSE-6028	6.5	3	2.5 X 2.5	29000	1375	1350	1325	1300	1275	1250	1225	1200	1050	1000	890	750	400	100							
7	GSE-6033	6.5	3	2.5 X 2	29300	775	750	725	700	690	680	675	670	650	625	550	525	500	350							
8	GSE-7028	7.5	3	3 X 3	33830	1680	1670	1660	1651	1575	1490	1426	1360	1240	1190	1100	975	760	165							
9	GSE-7033	7.5	3	2.5 X 2.5	33330	1370	1313	1300	1290	1270	1250	1240	1225	1205	1180	1180	1020	860	660	350	250					
10	GSE-7542	7.5	3	2.5 X 2	34425	778	750	740	735	730	720	710	700	690	680	675	670	665	660	620	600	550	325			
11	GSE-1030	10	3	3 X 3	41750	1700	1690	1680	1670	1650	1600	1550	1525	1300	1250	1150	1125	1000	900	700	550					

# V-9 Verticle

## V-9 वर्टीकल सबमर्शीबल SS बोडी

Three Phase									
Sr. No.	Model	H.P.	Stage	Phase	Outlet	Meter	Mexi - Duty Point	K-Tyep Pump Set III - Phase	Q-Tyep Pump Set III - Phase
1	GSE- 5002	5	2	3	2.5	26	1000 - 550	31800	34000
2	GSE- 5003	5	3	3	2.5	39	800 - 450	33550	-
3	GSE- 6002	6.5	2	3	2.5	28	1200 - 650	33700	35650
4	GSE- 7002	7.5	2	3	3	30	1400 - 750	35750	38300
5	GSE- 7003	7.5	3	3	3	40	1000 - 550	37250	41400
6	GSE- 7004	7.5	4	3	2.5	53	900 - 500	39000	
7	GSE- 7005	7.5	5	3	2.5	65	800 - 450	40750	
8	GSE- 7006	10	6	3	2.5	88	800 - 450	46000	

Horizontal Distance(Inch)	DISCHARGE RATE (Q-TYPE PER MINUTE)	PIPE DIAMETER ("D")								
		1"	1.25"	1.5"	2"	2.5"	3"	4"	5"	6"
4"		26	44	60	100	141	222	377	590	863
5"		32	55	75	127	177	277	472	749	1090
6"		39	67	91	150	213	331	567	885	1294
7"		45	78	105	177	250	386	663	1044	1521
8"		51	89	120	200	181	445	754	1180	1725
9"		58	100	135	227	318	499	849	1339	1952
10"		64	111	151	250	354	554	944	1475	2156
11"		71	118	166	277	390	608	1040	1634	2383
12"		77	132	177	300	427	667	1135	1771	2588
13"		84	143	195	327	459	722	1226	1930	2815
14"		91	154	211	350	495	776	1321	2043	3019
15"		97	165	225	377	531	831	1416	2225	3223
16"		103	177	240	400	567	890	1512	2361	3450
17"		109	188	256	427	604	944	1603	2520	3677
18"		116	198	271	449	636	999	1698	2679	3882
19"		123	210	285	477	672	1053	1793	2815	4109
20"		129	221	301	504	708	1108	1889	2951	4313
21"		135	232	316	527	745	1162	1984	3110	4540
22"		142	243	331	554	781	1221	2075	3269	4767
23"		148	254	345	577	813	1276	2170	3405	4971
24"		155	265	360	604	849	1330	2265	3541	5175
25"		161	276	375	627	885	1389	2361	3700	5402
26"		167	287	390	654	922	1444	2456	3836	5607
27"		174	298	405	676	958	1498	2547	3995	5834
28"		181	309	421	704	990	1553	2642		
29"		187	320	436	726	1026	1607	2738		
30"		193	331	451	754	1062	1666	2833		
31"				458	776	1099	1721			
32"				481	804	1135	1775			
33"				495	826	1167	1830			
34"				513	854	1203	1884			
35"				527	881	1239	1943			







**GOLD STAR ENGINEERS**

# H.D.P.E. PIPE

अेच.डी.पी.ई. पाईप

AN ISO 9001-2015  
Certified Company

## H.D.P.E. PIPES (PE-63)

(NON ISI PIPE PE-63)

SIZE		SDR41	SDR33	SDR26	SDR21	SDR17	SDR13.6	SDR11	SDR9	SDR7.4	SDR6
MM	INCH	PN 2	PN 2.5	PN 3.2	PN 4	PN 5	PN 6	PN 8	PN 10	PN 12.5	PN 16
32 mm	1						48	60	67	85	100
40mm	1.25				50	57	74	89	99	131	150
50mm	1.5			66	76.5	90	116	138	154	201	245
63mm	2			104.54	121.5	140	181	213	247	220	385
75 mm	2.5	97	113	142	174	201.5	253	306	344	452	545
90mm	3	131	166.5	206	245	283	353	429	496	645	790
110 mm	4	204	242	303	409	426	525	630	742	980	1180

## H.D.P.E. PIPES (PE-80)

SIZE		SDR41	SDR33	SDR26	SDR21	SDR17	SDR13.6	SDR11	SDR9	SDR7.4	SDR6
MM	INCH	PN 2.5	PN 3.2	PN 4	PN 5	PN 6	PN 8	PN 10	PN 12.5	PN 16	PN 20
32 mm	1					37.50	48	57	70	83	99
40mm	1.25				51	58.50	73	88	109	130	154.5
50mm	1.5			67	78	91.50	115	138	169.50	205	241
63mm	2			107	124	143	178	216	267	325	381
75 mm	2.5	98	115.50	145	178	206	253	307	380	457	535
90mm	3	131	170	210.50	250.50	289.50	365	430	544	655	777
110 mm	4	203	147.5	309	418	435.50	534	630	817	980	1163

## H.D.P.E. PIPES (PE-100)

SIZE		SDR41	SDR33	SDR26	SDR21	SDR17	SDR13.6	SDR11	SDR9	SDR7.4	
MM	INCH	PN 3	PN 4	PN 5	PN 6	PN 8	PN 10	PN 12.5	PN 16	PN 20	
32 mm	1					38	45	58	71.5	84	
40mm	1.25				52	58.50	70.50	92	111	129.50	
50mm	1.5			67.50	79	92	109	242	173	203	
63mm	2			107.50	125	143.50	173.50	226	272	324	
75 mm	2.5	98.50	116	146	179	207	246	309.50	387	457	
90mm	3	134.50	171	212	252	291	353	489	559	656	
110 mm	4	204.01	248.50	257	420	438	521	680	832	980	

Hasty \_\_\_\_\_ % Akta \_\_\_\_\_ % Panchavati \_\_\_\_\_ % Discount

V - 3 (Sigale Phase)				
H.P.	Capacitor (MFD)		Relay	Price
	R	S		
0.5	36	80 - 100	M.C.B.	650
0.75	36	80 - 100	M.C.B.	650
1	50	120 - 150	6 - 10	1300
1.5	36+36	120 - 150	9 - 14	1400

O.W. (Sigale Phase)			
H.P.	Capacitor (MFD)		MCB Price
	R	S	
0.5	36	80 - 100	450
1	50	80 - 100	500
1.5	72	80 - 100	650
2	72	80 - 100	700

V - 4 (Sigale Phase)					
H.P.	Capacitor (MFD)		Relay	Price	Heavy Penal
	R	S			
0.5	36	80 - 100	M.C.B.	650	850
0.75	36	80 - 100	M.C.B.	650	850
1	50	120 - 150	6 - 10	1300	1500
1.5	36+36	120 - 150	9 - 14	1400	1600
2	36+36	120 - 150	13 - 21	1400	1600
3	50+50	200 - 250	20 - 32	1750	1950

V - 4 (Three Phase)			
H.P.	Relay	Price	Heavy Penal
1	4 - 6	1400	1600
1.5	4 - 6	1400	1600
2	4 - 6	1400	1600
3	6 - 10	1400	1600
4	6 - 10	1400	1600
5	9 - 14	1500	1700

### TERMS & CONDITION :-

1. This Price List Cancels All Our Previous Price List.
2. Rate are F.O.R. at Rajkot.
3. Packing & Forwarding Charge Extra.
4. All Taxes & Govt. Levies will be Charge Extra.
5. Prices are Subject to Change Without any Notice.
6. Once Goods sold will not be taken back or Replace.
7. One year Warrantee Against Manufacturing Defect.
8. Payment must be made within 30 Day from the date of Invoice by Demand Draft Only.
9. Subject to Rajkot Jurisdiction only.

### Ware House/Sales - Pune

#### Our Bank Details :

#### Gold Star Engineers

A/c. No. 99999228126350/IFSC Code : HDFC0004776 ( 0 - Zero)

HDFC Bank, Kruti Onella, 150 Fit Ring Road, Rajkot - 360004

GST No.: 27AAGFG5345Q1ZT

### Gold Star Engineers - Rajkot

#### Our Bank Details :

#### Gold Star Engineers

A/c. No. 512020010016630/IFSC Code : CIUB0000181 ( 0 - Zero)

City Union Bank Ltd., Dr. Radhakrishna Road, Rajkot - 360005

GST No.: 24AAGFG5345Q1ZZ

AN ISO 9001:2015 CERTIFIED COMPANY



**GOLD STAR ENGINEERS**

## Details of Submersible Motor Parts :



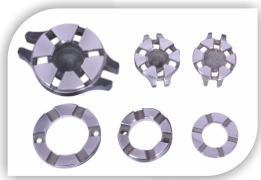
### Motor Body / Pump Body :

It is Made of S.S. 202 Grade Material to Product Against Corrosion and to Provide right Construction to Support other Parts of the Body.



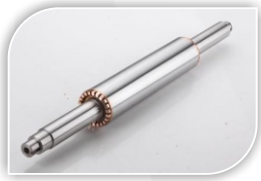
### Motor & Pump Bush :

Motor Bearing Bushes and Carbon Bushes are Made of Leaded tin bronze Material (LTB-4) for better. Lubrication with 2% Extra Nickel for Long Life.



### Thrust Bearing :

Thrust Bearing Pads are Made of SS-410 in Design of self aligned tilting segments for higher load bearing capacity with lapping surface finish. Carbbon plate is made from assam carbon with mirror surface for smooth and vibration free running.



### Motor Shaft / Pump Shaft :

Rotor Shaft is made of SS-410 with ground surface finish <0.75> micron aspers is standards. Each rotor is dynamically balanced having hard chrome plating on outside diameter for wear resistance and smooth running. Rotor brazing is done by induction brazing machine with 2% silver brazing rods for getting higher speed.



### Stamping :

Stamping are made of cold rolled non oriented steel sheets (CRANO) grade M.45.



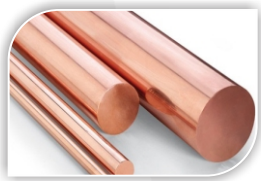
### V-4 Bowl Set :

Bowl set is made of Ivory, Noryl & Vergine Gfn2 .701 grade material.



### V-6 Bowl Set :

Bowl are made of S.S. investment casting - 304 grade and are most suitable against sand particles. Impellers are also made S.S.-410 grade casting, which gives 50 feet head per stage.



### Copper Rod :

Ec Grade ISI standard round & square type.

AN ISO 9001:2015 CERTIFIED COMPANY



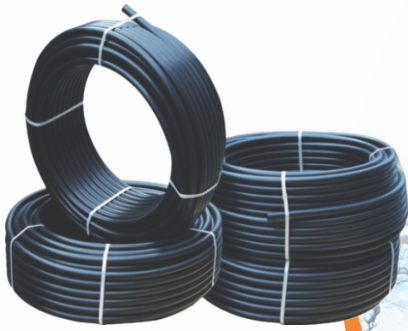
**Flow Gold**<sup>®</sup>  
PUMP

**GOLD STAR ENGINEERS**

पानी का फलो...

मतलब...

फलो गोल्ड...



Mfg. By :

**Gold Star Engineers**

Rajkot (Gujarat) INDIA

Sales : +91 99253 45635

Office : +91 99253 45634

MD : +91 92281 26350



E-mail : goldstarengg01@gmail.com

Website : www.goldstarengineers.com